

WILD ANIMALS COLLECTION No 1



ANWI 0101 / 3200 Sts

- | | |
|------------------|------------------|
| 1: 1 Light Brown | 5: 4 White |
| 2: 2 Dark Brown | 6: 2 Dark Brown |
| 3: 1 Light Brown | 7: 1 Light Brown |
| 4: 3 Mid Brown | |



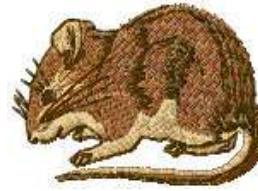
ANWI 0102 / 3400 Sts

- | | |
|---------------|------------|
| 1: 1 Tan | 3: 3 Brown |
| 2: 2 Dark Tan | 4: 1 Tan |



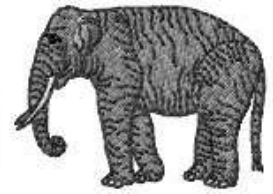
ANWI 0103 / 2700 Sts

- 1: 1 Black



ANWI 0104 / 4400 Sts

- | | |
|------------|-----------------|
| 1: 1 Brown | 3: 3 Dark Brown |
| 2: 2 Cream | 4: 1 Brown |



ANWI 0105 / 5000 Sts

- | | |
|-----------------|-----------------|
| 1: 1 Light Grey | 4: 4 Black |
| 2: 2 White | 5: 1 Light Grey |
| 3: 3 Dark Grey | |



ANWI 0106 / 5000 Sts

- | | |
|-----------------|-----------------|
| 1: 1 Light Grey | 4: 4 Black |
| 2: 2 White | 5: 1 Light Grey |
| 3: 3 Dark Grey | |



ANWI 0107 / 3900 Sts

- | | |
|-----------------|-----------------|
| 1: 1 Dark Brown | 5: 1 Dark Brown |
| 2: 2 Brown | 6: 5 Grass |
| 3: 3 Orange | 7: 1 Dark Brown |
| 4: 4 Flesh | |



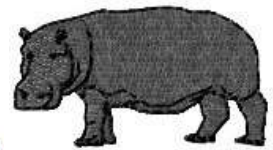
ANWI 0108 / 4000 Sts

- | | |
|-------------|-------------|
| 1: 1 Orange | 3: 3 Brown |
| 2: 2 Flesh | 4: 1 Orange |



ANWI 0109 / 5600 Sts

- | | |
|------------------|-----------------|
| 1: 1 Dark Brown | 4: 4 Black |
| 2: 2 Silver/Blue | 5: 5 Blue |
| 3: 3 Beige | 6: 1 Dark Brown |



ANWI 0110 / 3600 Sts

- | | |
|------------|-----------|
| 1: 1 Grey | 3: 1 Grey |
| 2: 2 Black | |



ANWI 0111 / 2800 Sts

- | | |
|------------------|------------------|
| 1: 1 Light Brown | 5: 3 Orange |
| 2: 2 Mid Brown | 6: 4 Dark Brown |
| 3: 3 Orange | 7: 5 Black |
| 4: 1 Light Brown | 8: 1 Light Brown |



ANWI 0112 / 5300 Sts

- | | |
|------------------|-----------------|
| 1: 1 Dark Brown | 5: 4 White |
| 2: 2 Mid Brown | 6: 1 Dark Brown |
| 3: 3 Light Brown | 7: 4 White |
| 4: 2 Mid Brown | 8: 1 Dark Brown |



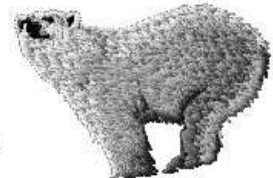
ANWI 0113 / 3700 Sts

- | | |
|--------------|------------|
| 1: 1 Brown | 3: 3 Black |
| 2: 2 Antlers | 4: 1 Brown |



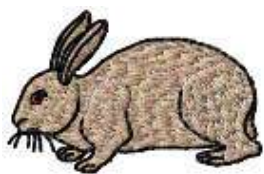
ANWI 0114 / 3900 Sts

- | | |
|------------|------------|
| 1: 1 White | 3: 1 White |
| 2: 2 Black | |



ANWI 0115 / 4600 Sts

- | | |
|-----------------|----------------|
| 1: 1 White | 5: 4 Dark Grey |
| 2: 2 Light Grey | 6: 5 Black |
| 3: 1 White | 7: 1 White |
| 4: 3 Mid Grey | |



ANWI 0116 / 2700 Sts

- | | |
|-------------|-------------|
| 1: 1 Orange | 3: 3 Black |
| 2: 2 Beige | 4: 1 Orange |



ANWI 0117 / 4600 Sts

- | | |
|------------------|------------------|
| 1: 1 Dark Brown | 5: 3 Light Brown |
| 2: 2 Mid Brown | 6: 4 Black |
| 3: 3 Light Brown | 7: 1 Dark Brown |
| 4: 1 Dark Brown | |



ANWI 0118 / 3000 Sts

- | | |
|-------------|------------|
| 1: 1 Cream | 4: 1 Cream |
| 2: 2 Orange | 5: 4 Black |
| 3: 3 Brown | 6: 1 Cream |



ANWI 0119 / 2800 Sts

- | | |
|----------------|----------------|
| 1: 1 Red/Brown | 3: 1 Red/Brown |
| 2: 2 Black | |



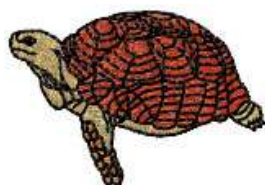
ANWI 0120 / 3600 Sts

- 1: 1 Red



ANWI 0121 / 7100 Sts

- | | |
|-------------|------------|
| 1: 1 White | 5: 1 White |
| 2: 2 Yellow | 6: 5 Red |
| 3: 3 Orange | 7: 1 White |
| 4: 4 Black | |



ANWI 0122 / 5100 Sts

- | | |
|-------------------|------------|
| 1: 1 Beige | 4: 4 Black |
| 2: 2 Orange/Brown | 5: 1 Beige |
| 3: 3 Dark Brown | |



ANWI 0123 / 3800 Sts

- | | |
|-----------------|-----------------|
| 1: 1 Light Grey | 3: 3 Off White |
| 2: 2 Dark Grey | 4: 1 Light Grey |



ANWI 0124 / 3100 Sts

- | | |
|------------|-----------|
| 1: 1 Grey | 3: 1 Grey |
| 2: 2 Black | |



ANWI 0125 / 4400 Sts

- | | |
|-------------|------------|
| 1: 1 White | 3: 3 Black |
| 2: 2 Orange | 4: 1 White |

First number is the Design Reference Number. 2nd number is the amount of stitches in the design

STOCK EMBROIDERY DESIGNS FROM THE MELLOW MOUSE COLLECTION ©

