

HANDS COLLECTION No 1



HMHA 0101 / 5500 Sts

1: 1 Peach
2: 2 Brown
3: 3 Black
4: 1 Peach



HMHA 0102 / 4500 Sts

1: 1 Flesh
2: 2 Black
3: 1 Flesh



HMHA 0103 / 3100 Sts

1: 1 Flesh
2: 2 Black
3: 1 Flesh



HMHA 0104 / 3400 Sts

1: 1 Flesh
2: 2 Black
3: 1 Flesh



HMHA 0105 / 3400 Sts

1: 1 Flesh
2: 2 Black
3: 1 Flesh



HMHA 0106 / 4100 Sts

1: 1 Flesh
2: 2 Black
3: 1 Flesh



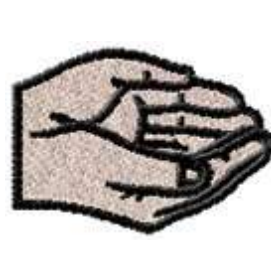
HMHA 0107 / 3900 Sts

1: 1 Flesh
2: 2 Black
3: 1 Flesh



HMHA 0108 / 3800 Sts

1: 1 Flesh
2: 2 Black
3: 1 Flesh



HMHA 0109 / 4600 Sts

1: 1 Flesh
2: 2 Black
3: 1 Flesh



HMHA 0110 / 3600 Sts

1: 1 Red
2: 2 Flesh
3: 3 White
4: 4 Black
5: 1 Red



HMHA 0111 / 2300 Sts

1: 1 Colour



HMHA 0112 / 3700 Sts

1: 1 Peach
2: 2 Brown
3: 1 Peach
4: 3 Red
5: 4 Black
6: 1 Peach



HMHA 0113 / 3900 Sts

1: 1 Flesh
2: 2 Brown
3: 3 Black
4: 1 Flesh



HMHA 0114 / 3100 Sts

1: 1 Flesh
2: 2 Black
3: 1 Flesh



HMHA 0115 / 3300 Sts

1: 1 Flesh
2: 2 Black
3: 1 Flesh



HMHA 0116 / 3300 Sts

1: 1 Flesh
2: 2 Black
3: 1 Flesh



HMHA 0117 / 3600 Sts

1: 1 Flesh
2: 2 Black
3: 1 Flesh



HMHA 0118 / 2900 Sts

1: 1 Black
2: 2 White
3: 1 Black



HMHA 0119 / 3100 Sts

1: 1 Flesh
2: 2 Black
3: 1 Flesh



HMHA 0120 / 4500 Sts

1: 1 Black
2: 2 Red
3: 1 Black



HMHA 0121 / 6100 Sts

1: 1 Black
2: 2 Flesh
3: 3 Off White
4: 4 Blue
5: 5 Brown
6: 1 Black



HMHA 0122 / 4200 Sts

1: 1 Flesh
2: 2 Dark Flesh
3: 3 Light Blue
4: 4 Blue
5: 5 Black
6: 1 Flesh



HMHA 0123 / 3900 Sts

1: 1 Flesh
2: 2 Light Blue
3: 3 Dark Blue
4: 4 Black
5: 1 Flesh



HMHA 0124 / 3400 Sts

1: 1 Flesh
2: 2 Black
3: 3 Yellow
4: 1 Flesh



HMHA 0125 / 5400 Sts

1: 1 Flesh
2: 2 Dark Flesh
3: 3 Black
4: 1 Flesh

First number is the Design Reference Number. 2nd number is the amount of stitches in the design

STOCK EMBROIDERY DESIGNS FROM THE MELLOW MOUSE COLLECTION ©

